



# Northumbrian Coast Rocks!

Lines in the landscape  
on the Northumberland  
Coast

AONB



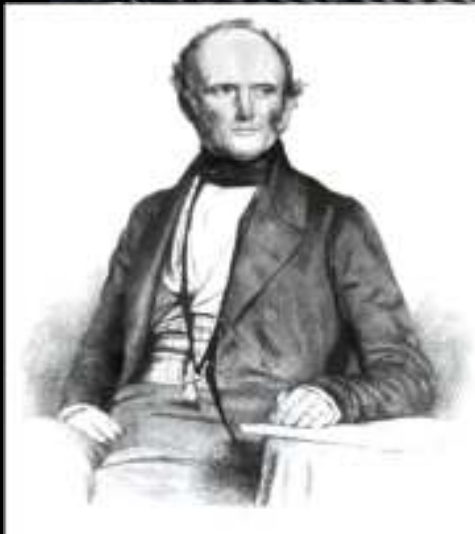








“The present is the key to the past”



Charles Lyell  
(1797-1875)















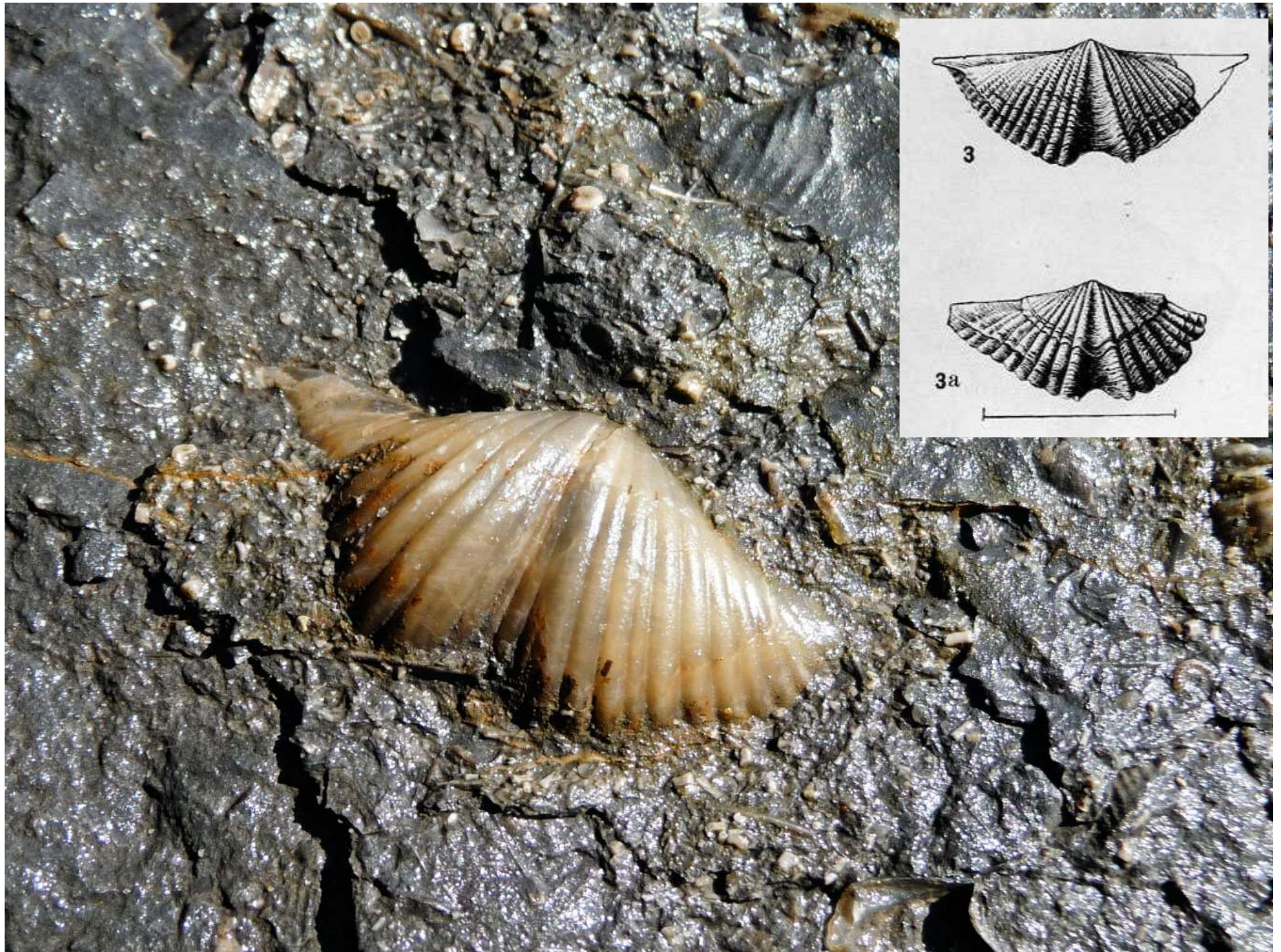


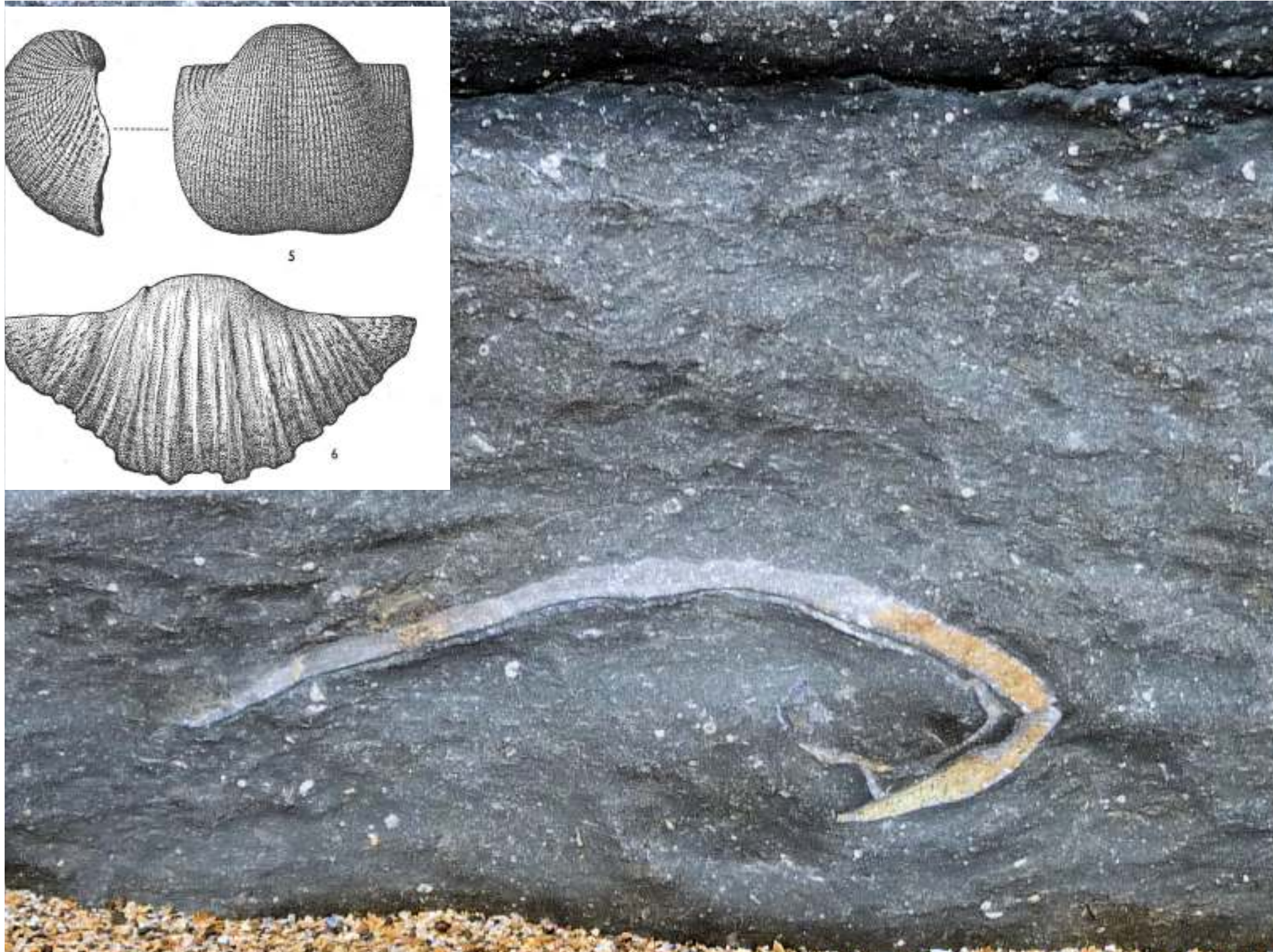
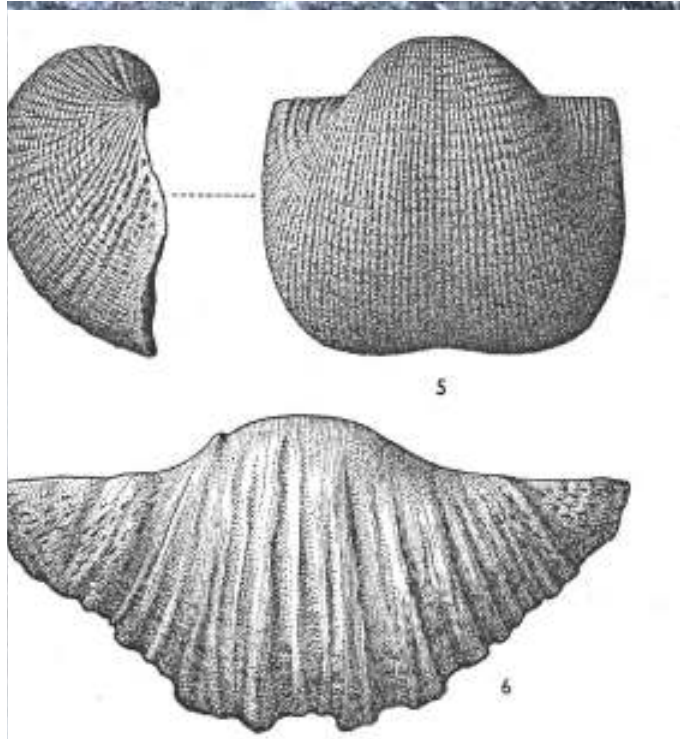


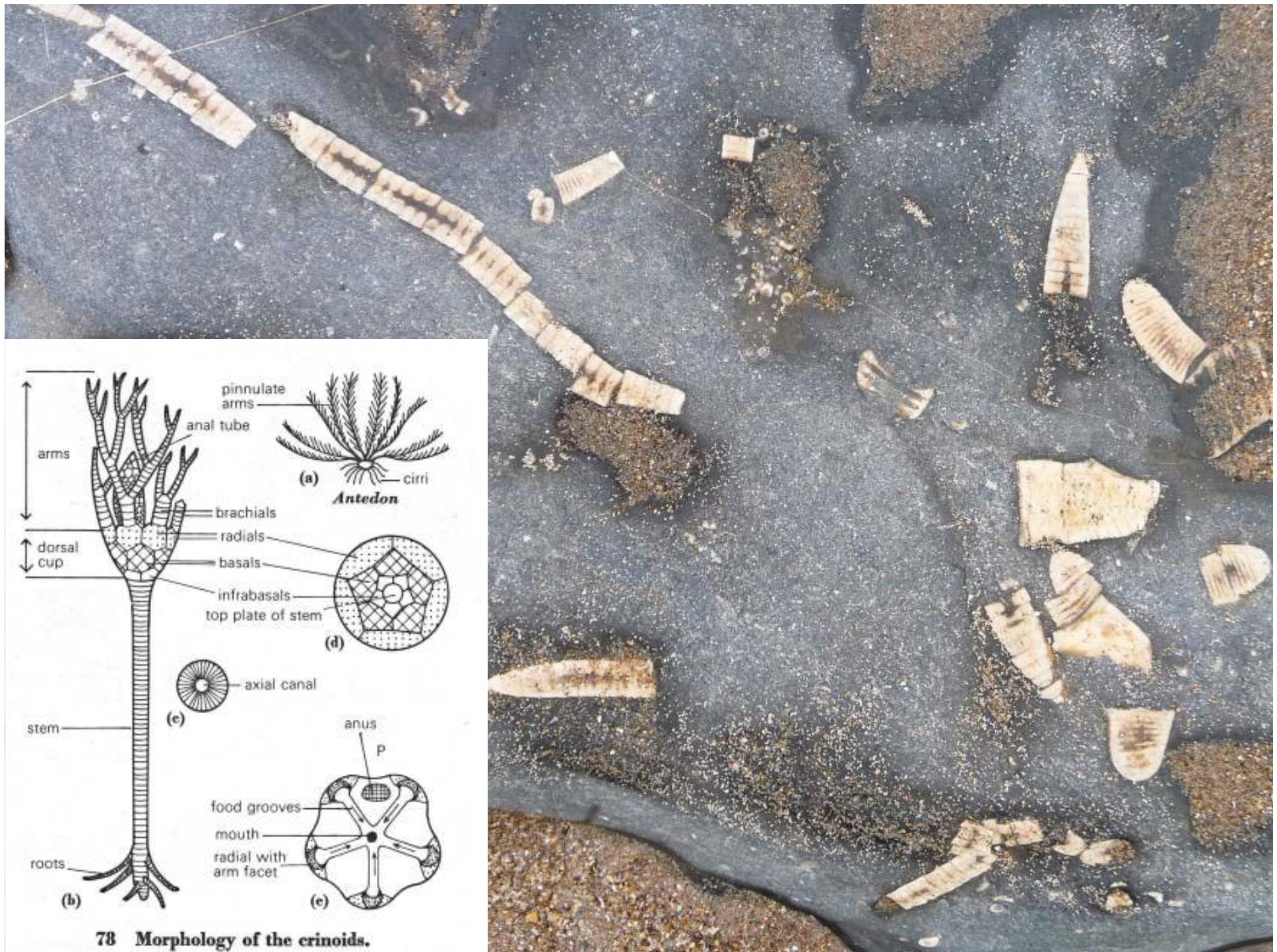










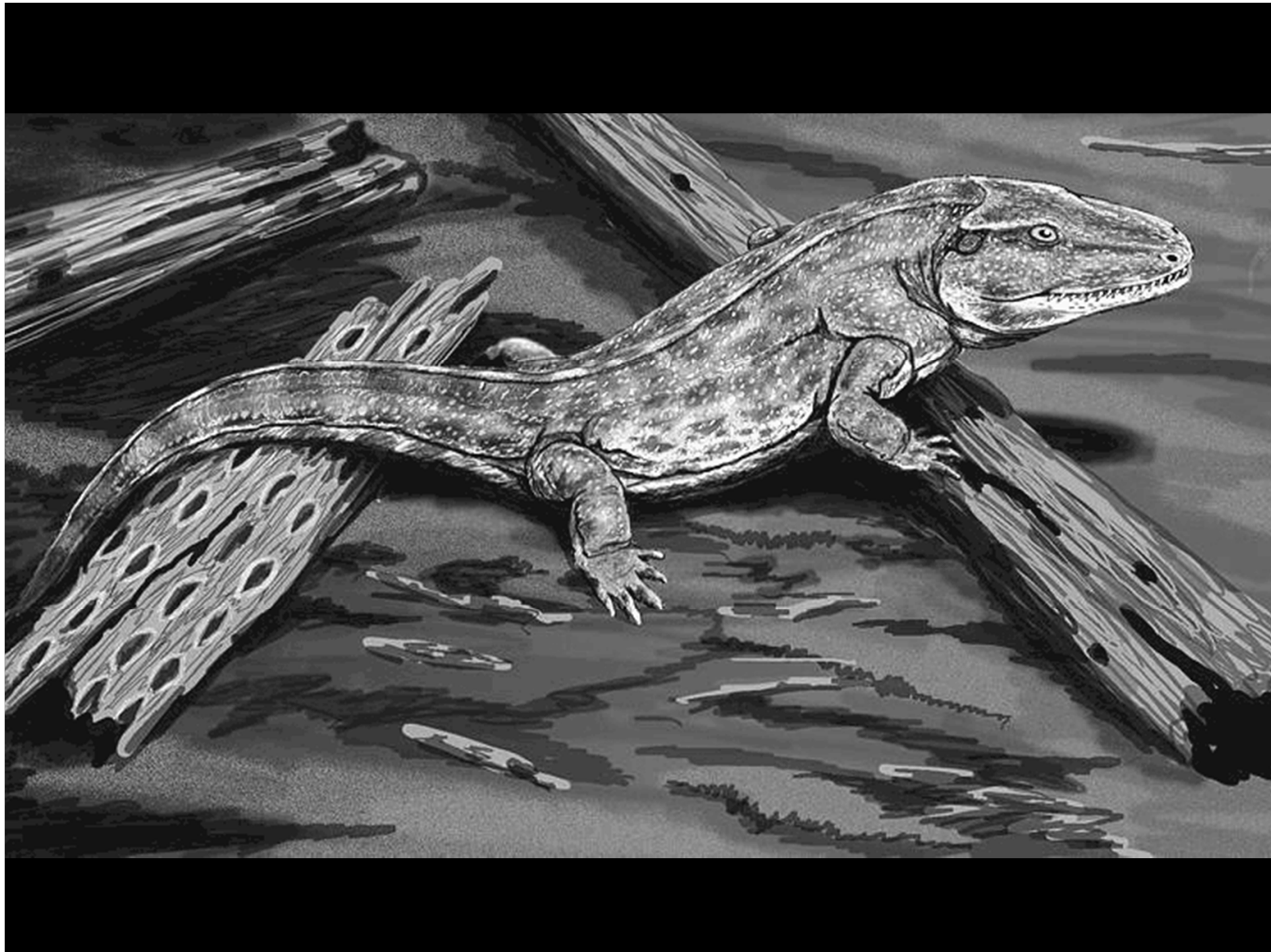


78 Morphology of the crinoids.











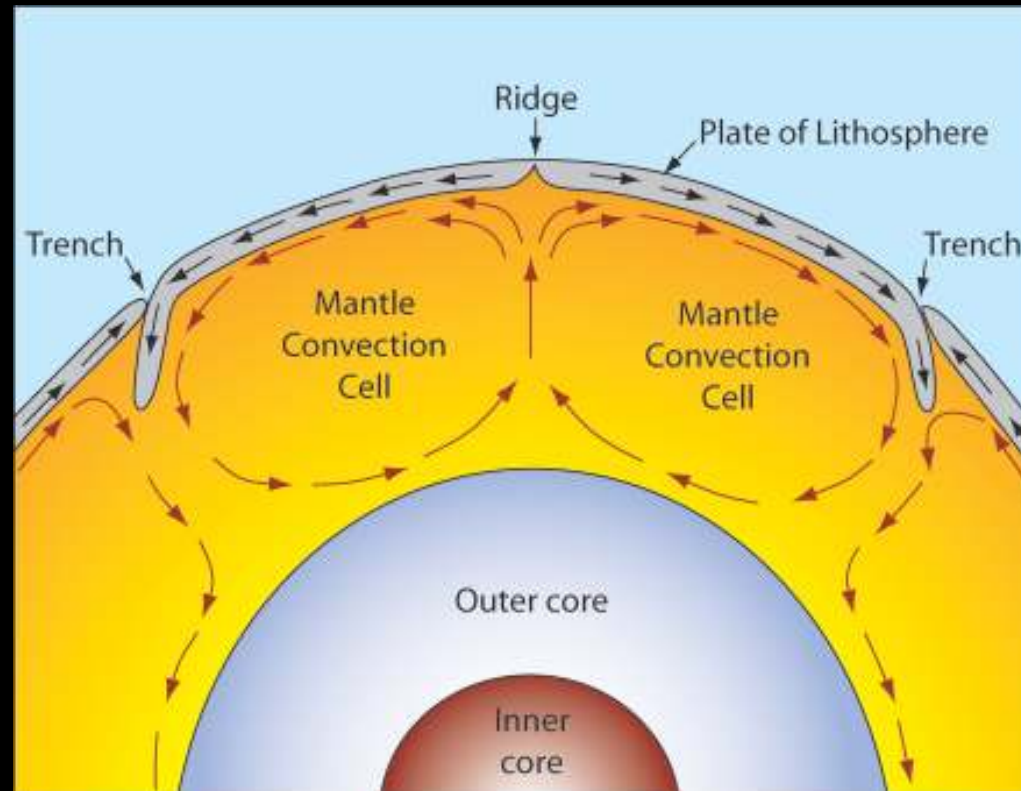






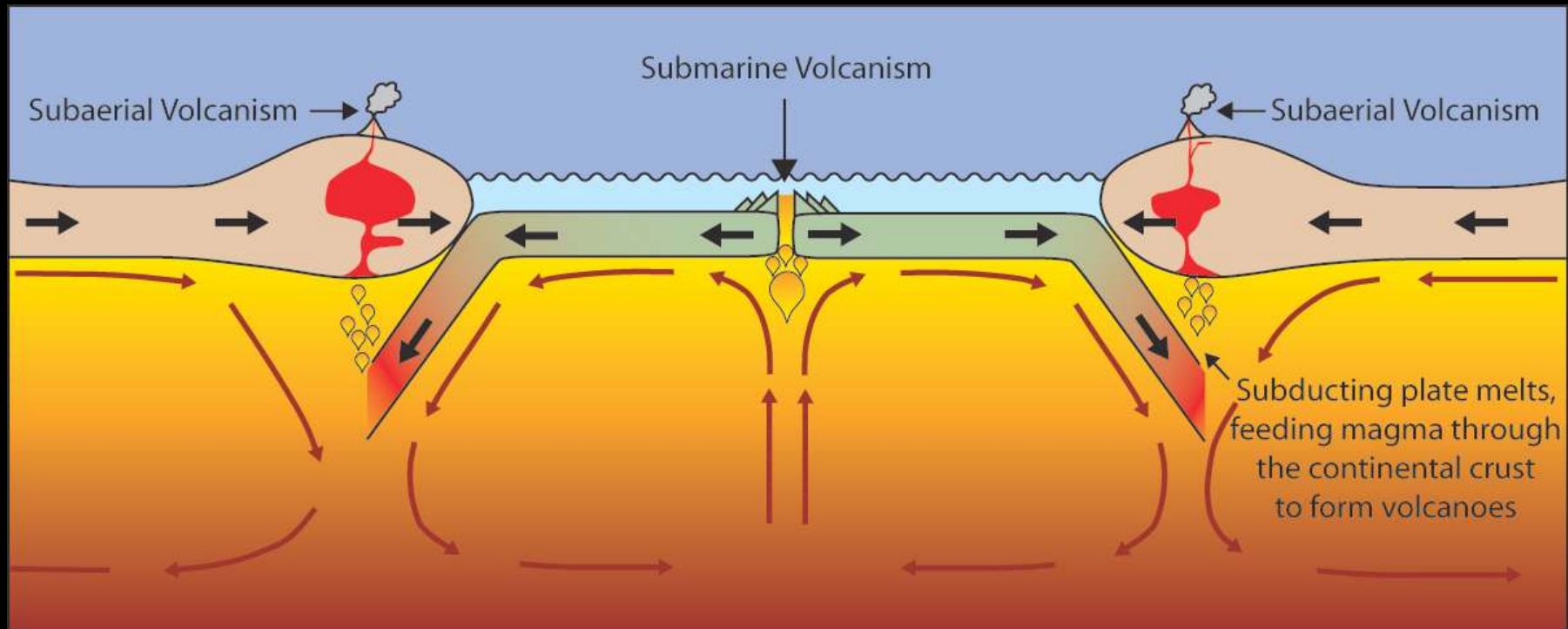
# Plate Movement

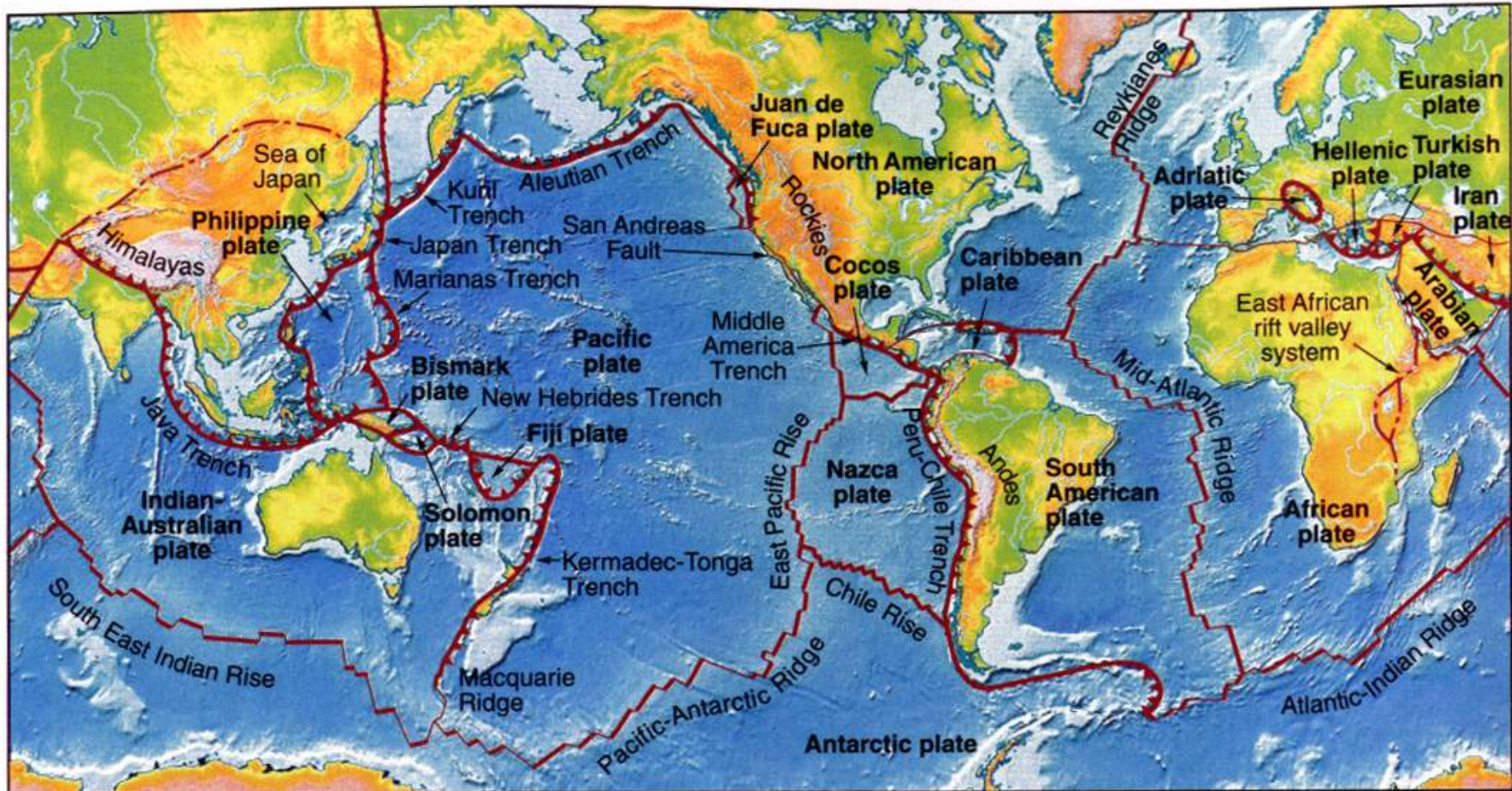
“Plates” of lithosphere are moved around by the underlying hot mantle convection cells





# Continental Drift





— Ridge axis  
divergent boundary

— Transform

▲▲▲ Subduction zone  
Convergent boundary

--- Zones of Extension within continents

--- Uncertain plate boundary

# Earth Plate



